

ODA-60M

POWER RANGE

320W~340W

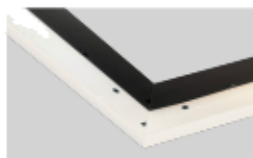
CELL FEATURE

158.75*158.75, 22.49%



JUNCTION BOX

High waterproof rating
Protection Degree: IP67
Safety Class: Class II
Rated Voltage: 1500V



FRAME

Strong mechanical load resistance up to 5400 Pa
Anodic oxidation layer resistant to chemical corrosion
Available in silver and black



5BB



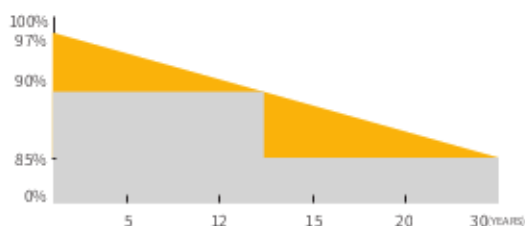
9BB

QUALIFICATIONS AND CERTIFICATES



• IEC61215 / • IEC61730

WARRANTY



12 YEARS Guarantee on product material and workmanship

30 YEARS Linear Power output warranty



MBB CELLS

More uniform current collection reduces the current loss of the cell inside panels



Anti-reflective glass

Increases the light absorption, and reduces the power loss caused by the self-cleaning in rain.



Excellent performance in low irradiance

Enable solar panels to generate electricity in the morning, cloudy and rainy days.



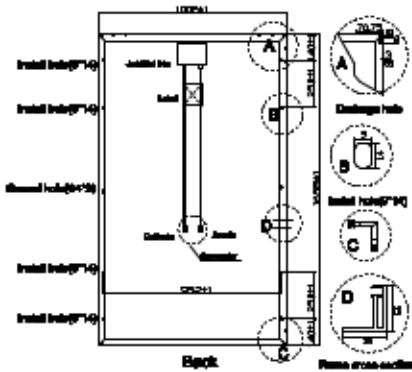
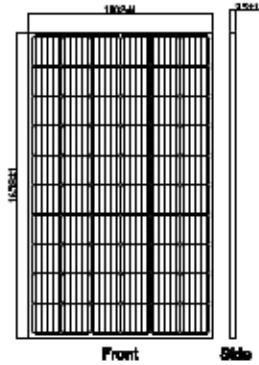
PID Resistant

Perfect resistance against PID (Potential Induced Degradation) to secure your investment.

ODA-60M

PV DRAWINGS

Unit:mm



ELECTRICAL DATA (STC)

Model Type	ODA320-30-M	ODA325-30-M	ODA330-30-M	ODA335-30-M	ODA340-30-M
Peak Power(Pmax)	320.00	325.00	330.00	335.00	340.00
Maximum Power Voltage(Vmp)	32.84	32.94	33.04	33.14	33.24
Maximum Power Current(Imp)	9.75	9.87	9.99	10.11	10.23
Open Circuit Voltage(Voc)	40.23	40.35	40.47	40.60	40.72
Short Circuit Current(Isc)	10.27	10.39	10.52	10.65	10.77
Cells Efficiency(%)	21.17	21.50	21.83	22.16	22.49
Module Efficiency(%)	19.26	19.56	19.86	20.16	20.46

* STC: irradiance 1000 W/m², AM 1.5, and cell temperature of 25° C

ELECTRICAL DATA (NOCT)

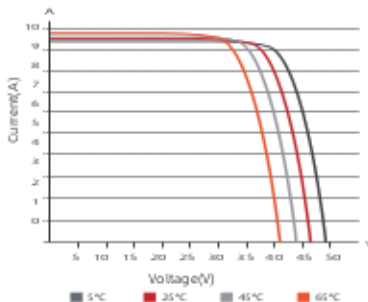
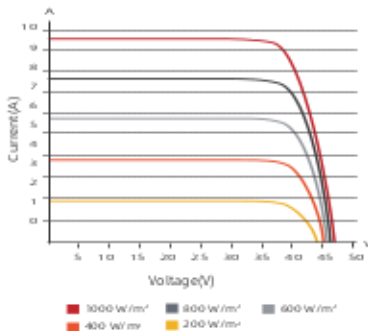
Model Type	ODA320-30-M	ODA325-30-M	ODA330-30-M	ODA335-30-M	ODA340-30-M
Peak Power(Pmax)	238.00	241.00	245.00	249.00	252.00
Maximum Power Voltage(Vmp)	30.71	30.80	30.90	30.99	31.08
Maximum Power Current(Imp)	7.75	7.83	7.93	8.04	8.11
Open Circuit Voltage(Voc)	37.83	37.95	38.07	38.18	38.29
Short Circuit Current(Isc)	8.22	8.30	8.41	8.52	8.60

* NOCT: irradiance 800 W/m², AM 1.5, ambient temperature 20° C, wind speed 1 m/s

TEMPERATURE & MAXIMUM RATING

Maximum System Voltage(V)	1500/1000
Maximum Series Fuse Rating(A)	20
Power Tolerance	0 ~ +3 %
Pmax Temperature Coefficients(W/°C)	-0.400 %
Voc Temperature Coefficients(V/°C)	-0.290 %
Isc Temperature Coefficients(A/°C)	+0.048 %
NOCT Nominal Operating Cell Temperature(°C)	45±2
Operating and Storage Temperature(°C)	-40 ~ +85

IV CURVE



MECHANICAL CHARACTERISTICS

Cell Type	158.75x158.75 Mono
No. of Cells	60(6x10)
Dimensions	1658x1002x35
Weight	18.6kg
Front Glass	3.2mm high transmission, low iron, tempered glass
Frame	Anodized Aluminium Alloy
Junction box	IP65/IP67
Output cables	4mm ² cable 90cm+mc4
MaxWind Load/Snow Load	2400Pa/5400Pa

PACKING WAY

20FT container	14 Packages/ 400pcs
40HQ containe	28 Packages/924PCS