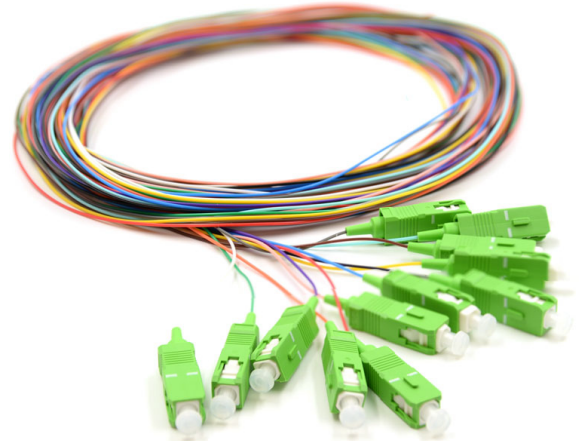
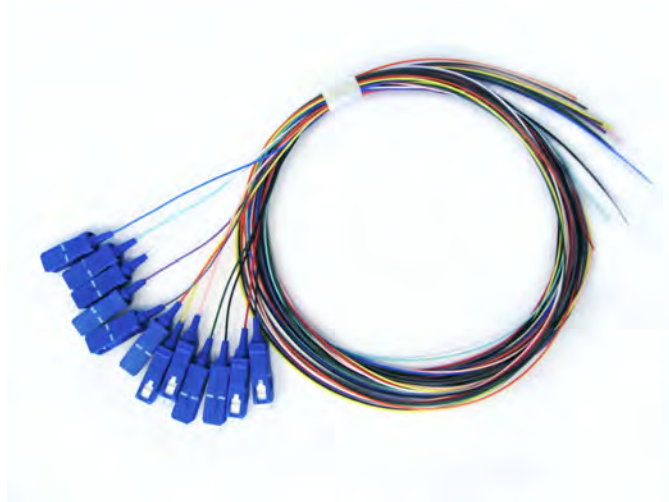


## 12 cores Bundle fiber Pigtail SC/PC

## 12 cores Bundle fiber Pigtail SC/APC



### **Bundle multi-fiber pigtail**

Fiber pigtail is a short optical fiber permanently attached to a source, detector, or other fiber optic device at one end and an optical connector at the other.

Fiber Optic Bunchy pigtail has connector at one end, the other end is fiber optic cable which be cut off.

Then it connect by splice with other cable core. It is widely used in fiber optic terminal box, ODF rack , cabinet to connect with fiber optic media converter/transceivers(also use coupler, patch cord, etc.)

SC connector can plug directly, easy to use, but also easy to drop out.

Multimode pigtail is orange, wavelength is 850nm, the transmission distance is 500m, for short distance

interconnects. SMF (single mode fiber ) is yellow, the wavelength:1310nm and 1550nm, the transmission

distance are respectively 10km and 40km.

**It consists of 12pcs simplex pigtails composition, separate color is as follows:**

Blue, Orange, Green, Brown, Gray, White, Red, Black, Yellow, Purple, Pink, Light blue.



**Features:**

- 4, 6, 8, 12, 24, 48 fibers optional
- With a fan out kit at the junction of fibers
- The fiber is flat type.
- Applicable connector: FC, SC, ST, LC...
- Cable material: PVC, LSZH
- Single mode G652D, G657A1 or multi mode OM1,OM2, OM3 optional
- Cable size:  $\Phi$  0.9mm,  $\Phi$ 2.0mm,  $\Phi$ 3.0mm

**Application:**

- 1,FTTH , CATV, LAN, MAN, WAN, Test & Measurement
- 2,Video transmission , Data transmission
- 3,Active Device Termination
- 4,Premise Installations
- 5,Telecommunication and Data processing Networks
- 6, Industrial, medical & military
- 7,Systems Integration for Long Haul, Metro and Access Network

**Specification:**

Parameter	Unit	Ribbon multi-fiber connector		
		SM		
		PC	UPC	APC
Insertion loss (typical)	dB	$\leq 0.3$	$\leq 0.2$	$\leq 0.3$
Return loss	dB	$\geq 45$	$\geq 50$	$\geq 60$
Operating wavelength	nm	1310, 1550		
Exchangeability	dB	$\leq 0.2$		
Vibration	dB	$\leq 0.2$		
Operating temperature	$^{\circ}\text{C}$	-40~75		
Storage temperature	$^{\circ}\text{C}$	-40~85		
Cord diameter	mm	$\phi 3.0, \phi 2.0, \phi 0.9$		
Fiber count	F	4, 6, 8, 12, 24, ... fibers		
Applicable connector		FC, SC, ST, MU, LC		