

Manuel for 11g Wireless USB Adapter

FCC Statement

This product has been tested and found to comply with the limits for a Class B digital device pursuant to Part 15 of FCC Rules. These limits are designed to provide reasonable protection against such interference when operating in a commercial environment. This equipment generates, uses and can radiate radio frequency energy, and if not installed and used according to the instructions, may cause harmful interference to radio communications.

Operation of this equipment in a residential area is likely to cause interference in which case the user, at his or her own expense will be required to take whatever measures may be required to correct the interference.

CE Mark Warning

This is a Class B product. In a domestic environment, this product may cause radio interference in which case the user may be required to take adequate measures.

1. Introduction

Thank you for purchasing 802.11g USB Network Adapter. Before you start installing the USB Network Adapter, please verify the following parts in the package.

1.1 Package Contents

The package contains the following:

- One 802.11g USB Network Adapter
- One USB 2.0 cable
- One CD Driver
- One Quick Installation

If you do not have any of the items listed above, please contact your local distributors or authorized resellers of Manufacturer.

1.2 Features



The features include:

- Establishes a wireless connection without the hassles and cost of cabling
- Operates Ad-Hoc or Infrastructure mode
- Utilizes up to 128-bit WEP encryption
- Enjoys high-speed data transfer rate up to 54 Mbps
- Employs automatic data rate switching which offers maximum reliability, throughput and connectivity
- Possesses the network's range up to 100 meters indoor and 400 meters outdoor
- Monitors and configures the network via the supplied friendly-interfaced application –Wireless-G Configuration Tool

2. Getting to Know 802.11g USB Network Adapter

Your wireless 802.11g USB Network Adapter should be located in the USB port of your computer.

2.1 LED Indicator

Status	Indicator	Description
LINK		<i>Lights</i> to indicate the adapter is successfully connected to a network.
ACT		<i>Blinks</i> to indicate the adapter is actively transmitting or working.

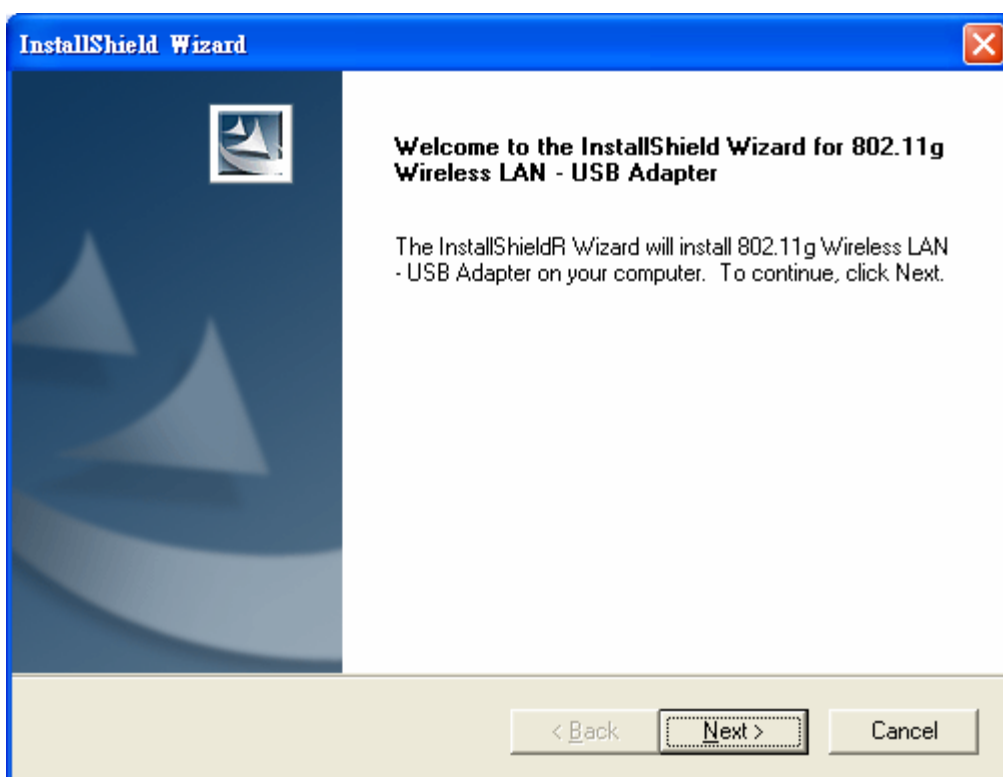
Note: The 802.11g USB Network Adapter is packaged with a supplied USB 2.0 cable. You can use the cable to move the adapter easily.

3. Installing 802.11g USB Network Adapter

To install the 802.11g USB Network Adapter, please follow the steps:

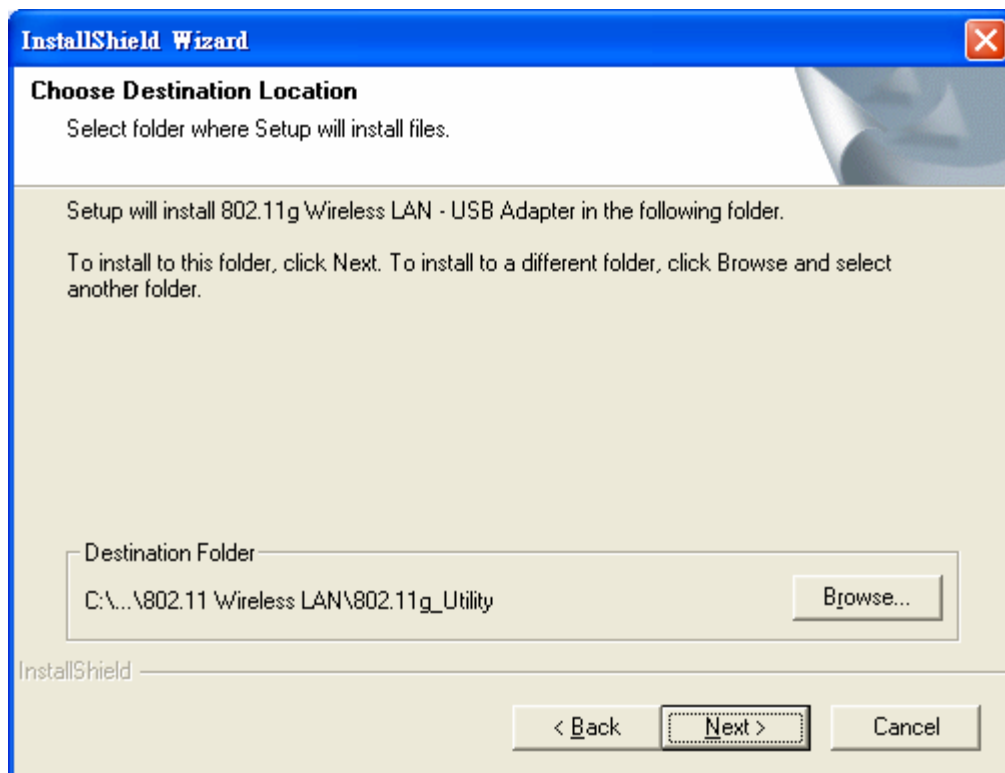
1. Insert the supplied Setup CD into your CD-ROM drive, and click the drive of CD-ROM. You will see the **Driver** and **USB_Setup** icon in the screen. Click **USB_Setup** to install the driver.
2. The InstallShield Wizard will appear. Click **Next**.

Figure 3.1



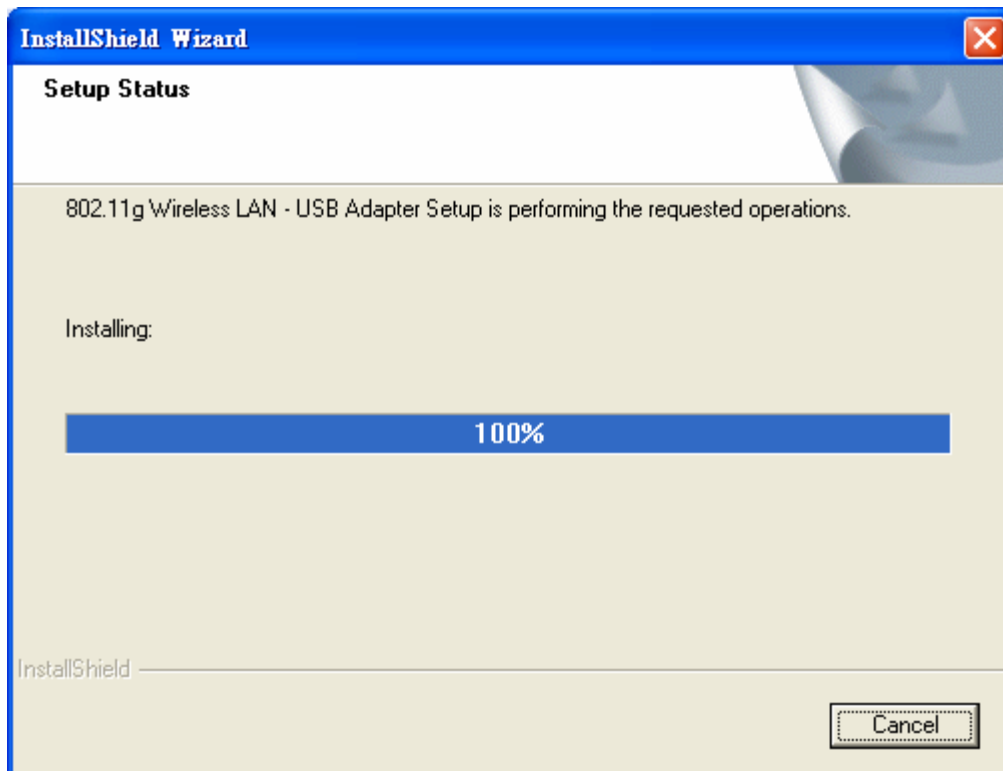
3. The **Choose Destination Location** screen will appear. You can click **Browse** to choose the destination folder. Or click **Next** to proceed.

Figure 3.2



4. The installing status is showed in screen. When the process is finished, the driver is installed successfully.

Figure 3.3



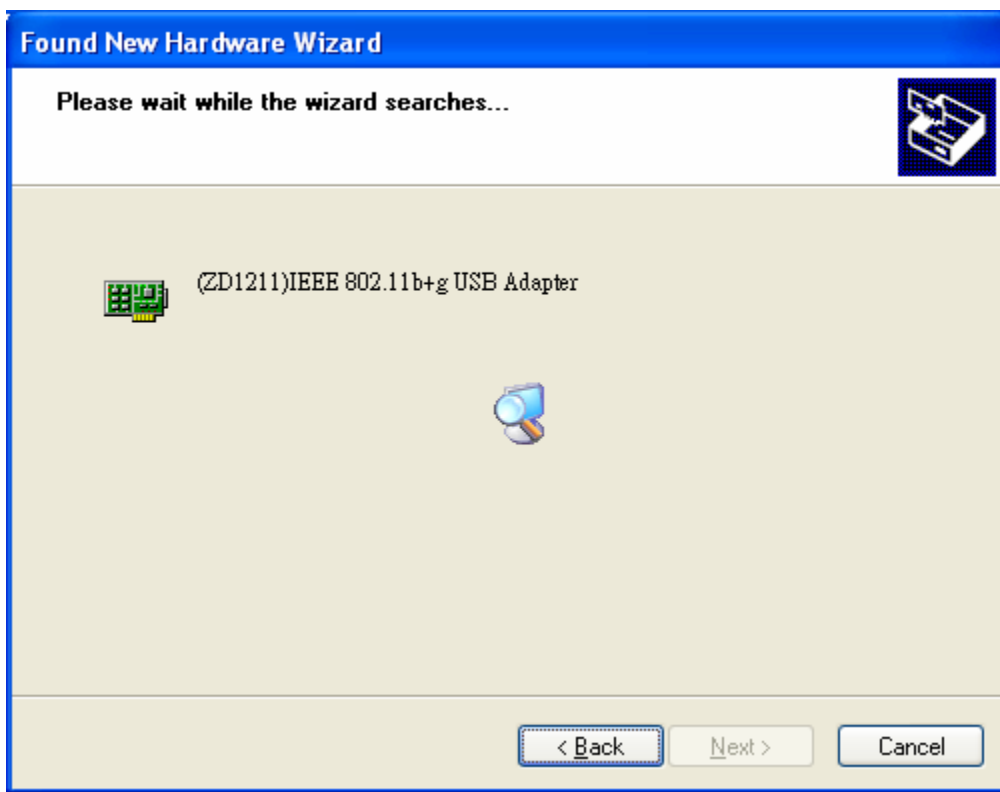
5. Plug Wireless 802.11g USB Network Adapter into a USB 2.0 port on your PC. Or you can plug the Network Adapter with the supplied USB cable. Then, **Found New Hardware Wizard** will appear. Follow the wizard to install software.

Figure 3.4



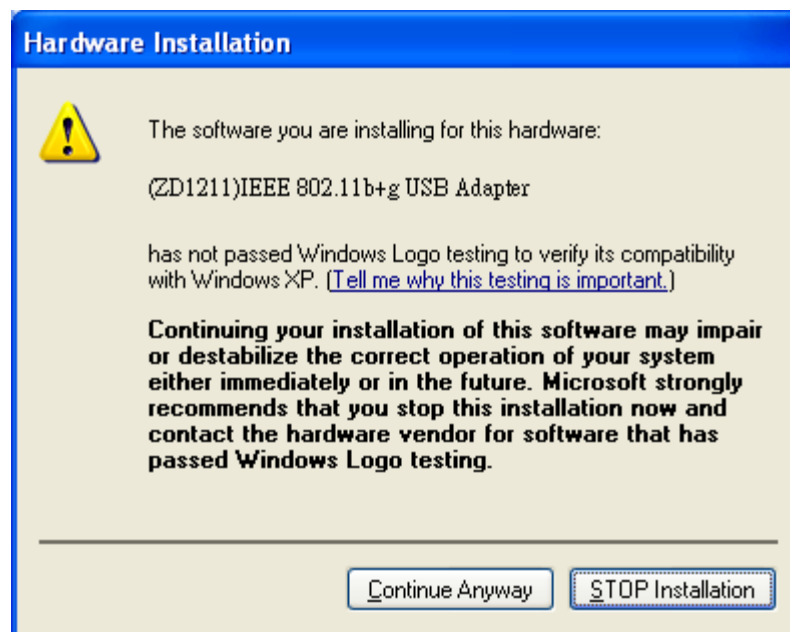
6. The wizard will search for the USB software. Click **Next** to proceed.

Figure 3.5



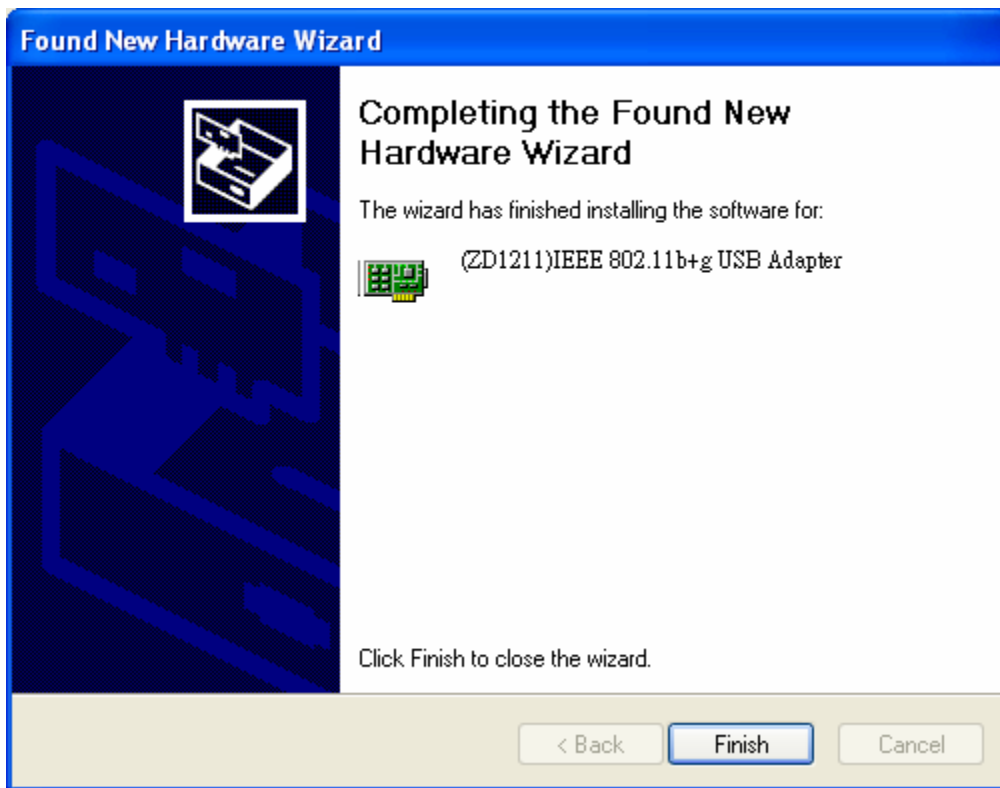
7. Windows will notify you that the driver has not passed the Windows Logo testing. Because the USB Network Adapter has been tested to work with Windows XP, please choose **Continue Anyway** in the **Hardware Installation** dialog box.

Figure 3.6



8. The wizard has finished installing the software. Click **Finish**.

Figure 3.7




9. After completing the Found New Hardware Wizard, a new icon  will appear in your Icon tray. Check the icon to make sure that the utility is installed successfully.

Figure 3.8



4. Configuration

If your operation system is Windows XP system, you can choose either one tool as below to configure the wireless LAN setting.

- ✓ Use Windows XP build-in service, called “Wireless Zero Configuration”, or
- ✓ Use the configuration utility we offered.

4.1 To configure by using Windows XP build-in “Wireless Zero Configuration”


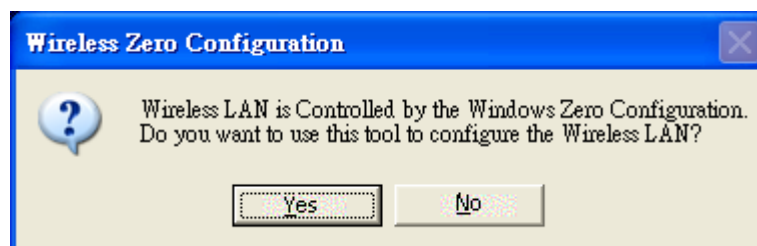
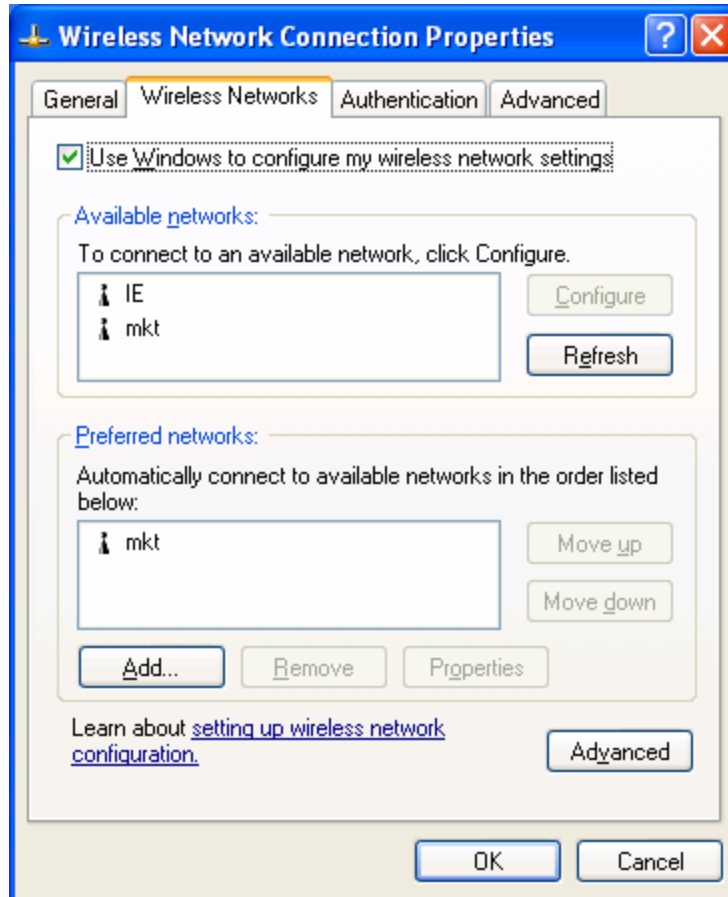
Click  icon, then a box will pop out to ask for you the configuration tool. If you want to use *Windows Zero Configuration* tool to configure the Wireless LAN, click **No**, and Windows Zero Configuration will direct you to configure. Please do the following steps.

Figure 4.1



- A. Click  icon, to see the wireless networking connection status. Click **Content**, then **Wireless Network Connection Properties** screen will appear.

Figure 4.2



B. Select **Wireless Networks**, and make sure that *Use windows to configure my wireless network* settings option is checked. Now , you can set your networks, which is available on the list.

4.2 To configure by using the utility we offered


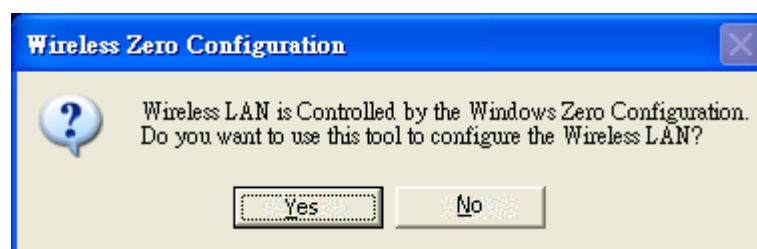


Click  icon, then a box will pop out to ask you for the configuration tool. If you want to use the utility we offer to configure the Wireless LAN, click **Yes**.

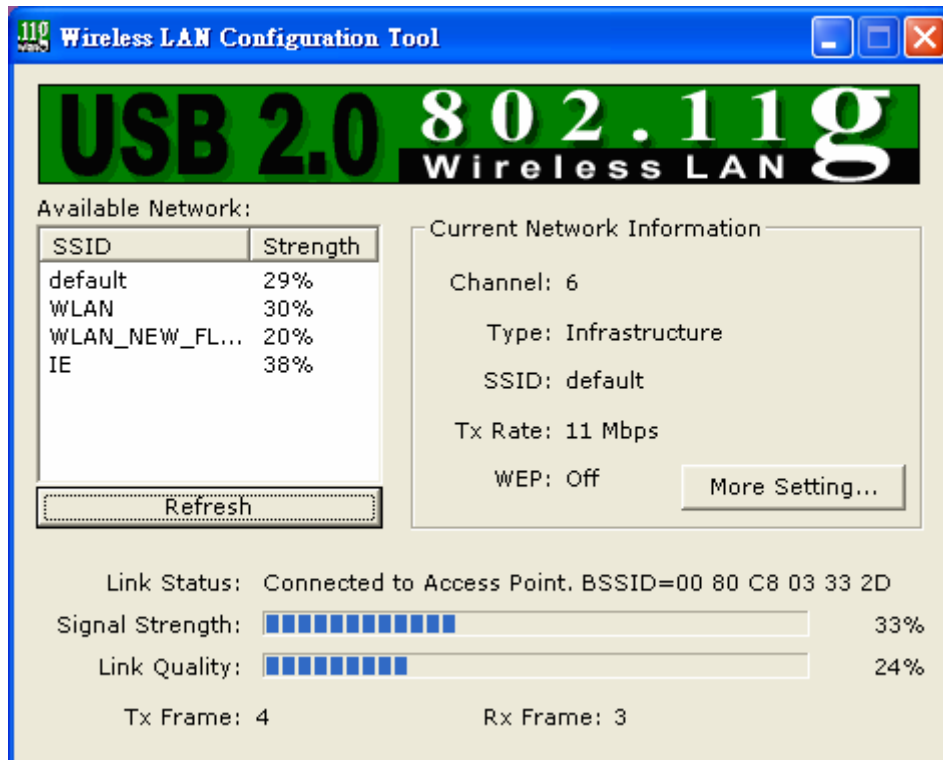
Figure 4.3



A. If the networking is working right now, the  icon will appear in the icon tray. Double click  icon. The utility screen will appear.

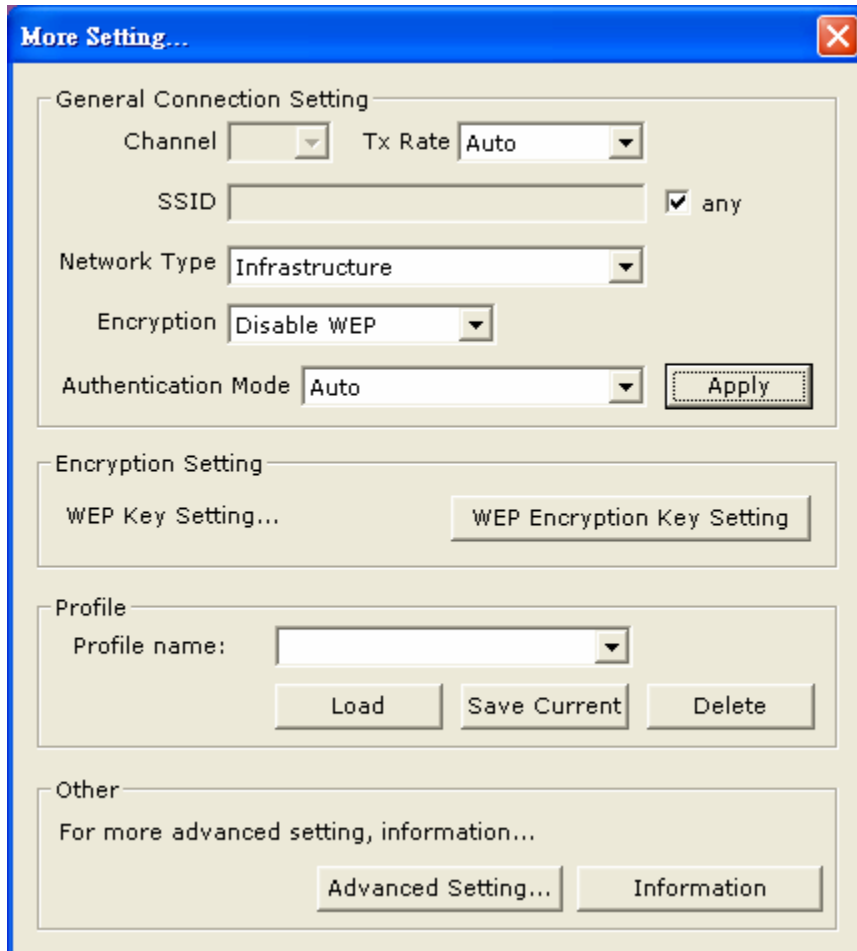
B. You can view the available network with the SSID on the list. For the current network information, it shows channel, station type, SSID, Tx rate, and WEP. To have detail information, click **More Setting**. Click **Refresh** to search new networks.

Figure 4.4



C. After clicking **More Setting**, you are allowed to set the connection by clicking **Change**, then **Apply** to confirm the setting.

Figure 4.5



The image shows a 'More Setting...' dialog box with a blue title bar and a close button (X) in the top right corner. The dialog is divided into several sections:

- General Connection Setting:** Contains dropdown menus for 'Channel', 'Tx Rate' (set to 'Auto'), 'Network Type' (set to 'Infrastructure'), and 'Authentication Mode' (set to 'Auto'). There is a text input field for 'SSID' with a checked checkbox labeled 'any' to its right. An 'Encryption' dropdown is set to 'Disable WEP'. An 'Apply' button is located at the bottom right of this section.
- Encryption Setting:** Contains a 'WEP Key Setting...' button and a 'WEP Encryption Key Setting' button.
- Profile:** Contains a 'Profile name:' label and a dropdown menu. Below it are three buttons: 'Load', 'Save Current', and 'Delete'.
- Other:** Contains the text 'For more advanced setting, information...' and two buttons: 'Advanced Setting...' and 'Information'.

3. Specifications

3.1 Technical Specifications

Standards	IEEE 802.11, IEEE 802.11b, IEEE 802.11g
Modulation	IEEE 802.11b: DSSS, IEEE 802.11g: OFDM
Speed	Up to 54 Mbps

3.2 Environmental Information

Dimensions (WxHxD)	82 x 29 x 10 mm
Operating Voltage	5 V
Standard Conformance	FCC, CE
Operating Temperature	0°C to 40°C (32°F to 104°F)
Storage Temperature	-40°C to 70°C (-40°F to 158°F)
Operating Humidity	20% to 95% Non-condensing
Storage Humidity	20% to 95% No-condensing

Appendix A: Warranty Information

Manufacturer provides this limited warranty for its product only to the person or entity who originally purchased the product from Manufacturer or its authorized reseller or distributor. Manufacturer guarantees that equipment is free from physical defects in workmanship and material under normal use from the date of original retail purchase of the Hardware. If the product proves defective during this warranty period, call Manufacturer Customer Service in order to obtain a Return Authorization number. Be sure to have a proof of purchase on hand when calling. Return requests cannot be processed without proof of purchase. When returning a product, mark the Return Authorization Number clearly on the package pack and include your original proof of purchase.

In no event shall Manufacturer's liability exceed the price paid for the product from direct, incidental or consequential damage resulting from the use of the product, its accompanying software, or its documentation. Manufacturer makes no warranty or representation, expressed, implied, or statutory, with respect to its products or the contents or use of this documentation and all accompanying software, and specifically disclaims its quality, performance, merchantability, or fitness for any particular purpose. Manufacturer reserves the right to revise or update its products, software, or documentation without obligation to notify any individual or entity.