

## Network HD

### *Quick Installation Guide*

#### **Unpacking Information**

---

Thank you for purchasing this product. Before you move on, please check the following contents of the package.

1. One Network HD (Hard Disk not Included)
2. One Power adapter (12V 3A)
3. One QIG
4. One Utility/Manual CD-ROM
5. Rubber foot x 4
6. Screws for HD Fastening x 4

#### **System Requirement**

---

- 200Mhz Processor or higher
- 64MB RAM Recommended
- CD-ROM Drive
- Windows 95/98/98SE/Me/NT 4.0/2000/XP/ Linux/ MAC OS

#### **Installing And Using Network HD**

---

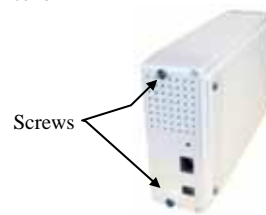
This QIG provides a step-by-step guide to the installation and configuration of the Network HD. It assumes that your computers use the Windows 95/98 or newer version as your operation system and a WEB browser is installed for configuration. We suggest you to go over the whole configuration before doing more advanced operation.

## Hard Disk Installation

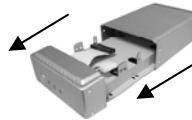
---

### *How to Connect Your Hard Disk with the Network HD:*

1. Loosen the two screws on the rear panel with a screwdriver.

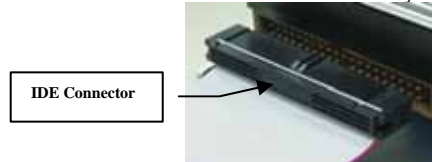


2. Grab the front panel and pull the foundation out of the case.

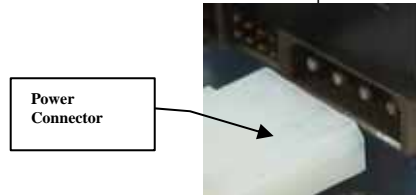


3. Adjust your HD jumper to Master

4. Connect the IDE connector into the IDE socket of your Hard Disk



5. Connect the Power connector into the power socket of your Hard Disk



6. Secure the HD with the screws we provided

7. Push the Hard disk and HD holder back into the case and fasten the screws

## Network HD Express Setup Wizard

The Express Setup Wizard provides an installation guide from cable attaching to the initialization of management. Please follow up the steps below to proceed.

Note: If you've run the wizard before and create any shortcut to access/ manage the device. Please delete them to run the Express Setup Wizard successfully.

### Step1: Activate The Utility software

Put the Utility CD into your CD-ROM drive and wait the startup Menu to auto run. If the utility doesn't activate automatically, click the Start button, select Run, then type D:\autorun.exe (where D:\ represents your CD-ROM drive) into the blank then press Enter.

- Please do as the program shows to finish the basic Cable installation and LED checking.
- Please Click "Next" to continue.



Welcome page

**Steps2: Follow the Guide to install the Network HD**

- Connect the power connector and Press the Power Button on the Front Panel

- Ensure that the Power LED is Green.

Note. To power off, press the Power Button for **two seconds** until Power LED start blinking then go off.



Power On

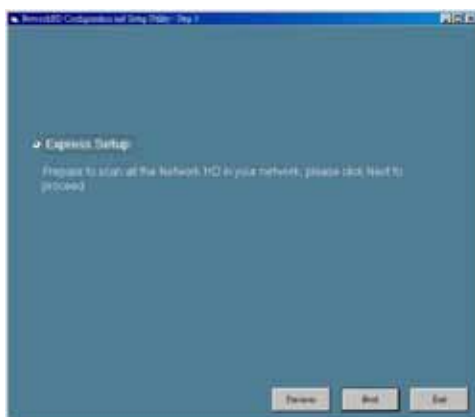
- Connect the Network HD and PC/Switch with one Ethernet RJ-45 cable.

- Ensure that the Link/Act LED is Green

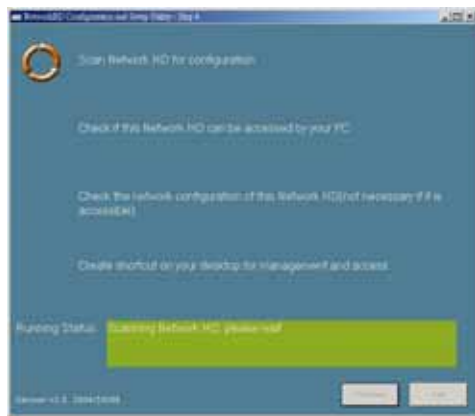


LAN Connection

Step3: Click "Next" to start the Express Setup Wizard



Start to setup

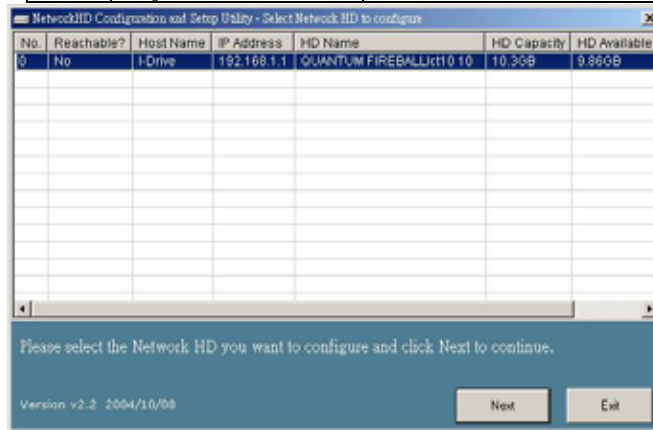


Scan the HD

- Select the Device you are going to setup then Click "Next"

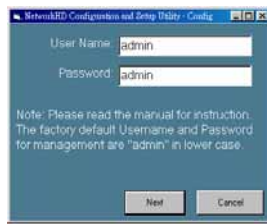
The Setup Wizard will take different actions according to the status of the Network HD:

Reachable	Status	Action
NO	The PC that runs the Setup Wizard currently cannot access this network HD with the present network settings.	1.Adjust the network settings of the Network HD to make the Network HD to be accessible by the PC. 2.Create two shortcuts to access and setup the Network HD
YES	The PC that runs the Setup Wizard currently can access this network HD with the present network settings.	Create two shortcuts to access and setup the Network HD



HD Found<sup>1</sup>

<sup>1</sup> If your PC obtains IP automatically, your PC may not be able to get network configurations from your DHCP server and the Express Setup Wizard will not be able to get the PC's IP to setup its network configuration, IP etc.... To solve the problem, you need to connect your PC with a router with a DHCP Server or specify your IP in you IP address on Windows Network dialog box. As for the IP setup, Please refer to "IP Protocol Setup" of the Manual CD-ROM.



User name/Password Reminder



Setting....

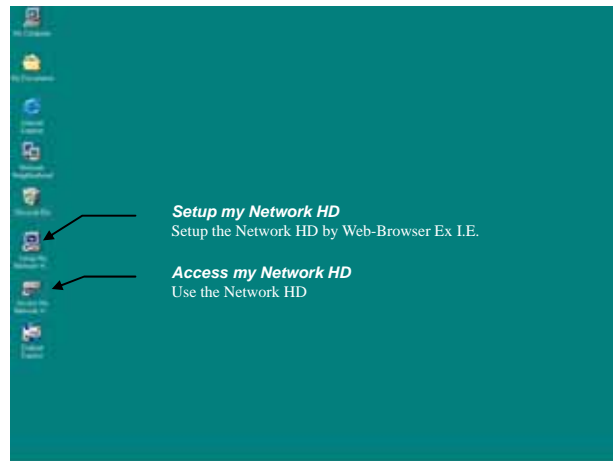


Note that how the two shortcuts function.



Click OK to setup your Network HD by Web-based UI

After the auto installation, there should be two shortcuts created on your desktop. "Setup My Network HD" is created for users to access the embedded management web pages  
" Access My Network HD" is the Link to access the shared folder in the Network HD. Please follow the statement below as the Network HD accessing guide.  
To setup the Network HD, please refer to the management guide in user's manual.



Icons Created

Note: If an unformatted or no hard disk is installed, users will not be able to access the Network hard disk by clicking the "Access My Network HD". But you will still be able to manage the Network HD by clicking "Setup my Network HD"

## Access this HD

1. Click the "Access my Network HD" icon to access. The device provides three default accounts for users to read/writes the folders in different authority levels:

- ALL= The account is allowed to Read/Write all the folders in Network HD
- Power= The account is allowed to Read/Write the "share" Folder only
- Guest= The account is allowed to Read the "share" Folder only

Note: The "Share" folder will be created automatically in the Network HD and can be accessed by all users as default.

2. You can enter the "all/power/guest" for the Username and password.

Ex. Username: all  
Password: all



## Setup the Network HD

To configure the Network HD through your computer with a web browser installed. Please follow up the steps below.

- Double click the "Setup my Network HD" icon on your desktop screen
- Type 192.168.1.1 into the URL web address location and press Enter.

The Username and Password Required window appears.

- Enter **admin** in the User Name location (default value).
- Enter **admin** in the Password location (default value).
- Click "OK" button



## Home Page

The Network HD is managed via a web-based graphical user interface (GUI) that can be accessed with a standard HTML (HTTP v1.0) compliant browser.

The Home page is shown as below.



**SOHO NAS**  
(Network Attached Storage) **EXT3**

Home Networking Administration Share FTP

**Status**

Host Name:	-Drive
IP Address:	192.168.1.1
Version:	v1.00(10-09-2004)-ext3

[Click here for more information...](#)

**Configuration**

**Networking**  
network setting  
→ [Host Name](#) [IP Address](#) [SubnetMask/Password](#)

**Administration**  
system setting  
→ [Reboot System](#) [HD Format](#) [Factory Default Reset](#) [Firmware Upgrade](#)  
[System Time](#) [Character Set](#)

**Share**  
users and folders access setting  
→ [User Configuration](#) [Folder Configuration](#)

**FTP**  
FTP login password setting  
→ [FTP Configuration](#) [FTP Password](#)