

Novell 5 NDPS with Print Server setup procedure:

**Q1: Does Print Server support NetWare5.0 NDPS Queue Based printer gateway?
(NetWare 5.0 provide IPX/SPX and Pure IP protocols, this Q only for IPX/SPX)**

ANS:Yes

Example:

Tree Name=Novell, Organization=TeSupp, CN=Admin.TeSupp,

Server Name=TECH_50

NetWare Client32 v2.2 (or later) installed on each workstation

1.Create Queue : Using Bi-Admin 3.0 or later

Workstation needs to install NetWare Client 32, then Bi-Admin “QuickSet ” will be able to create queue.

1.1 Install Bi-Admin to the desired directory on your system

1.2 Run Bi-Admin using “Start”->”Program”->”Bi-Admin”

1.3 Select “Configuration” on the main menu bar

1.4 Select “NetWare”-> Enable “NDS” in “Print Server” mode

1.5 Press “Configure”->select “Print Server NDS Tree name”(e.g. TS).

Then enter the Print Server NDS Context or using “Browse” if necessary. (e.g. TESUPP, figure1)

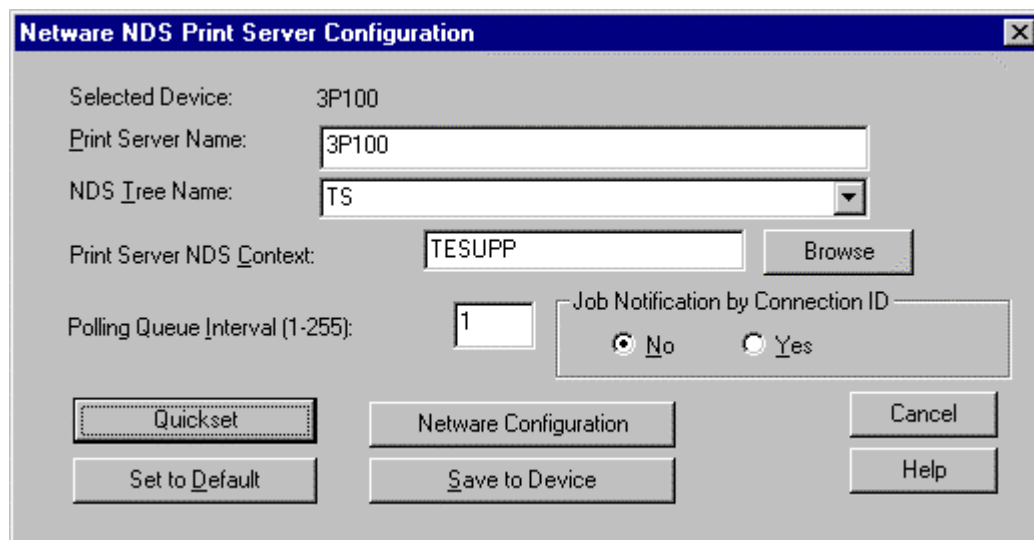


figure1

1.6 Press “Quickset” button (see figure1) to create the Queue(see figure2)

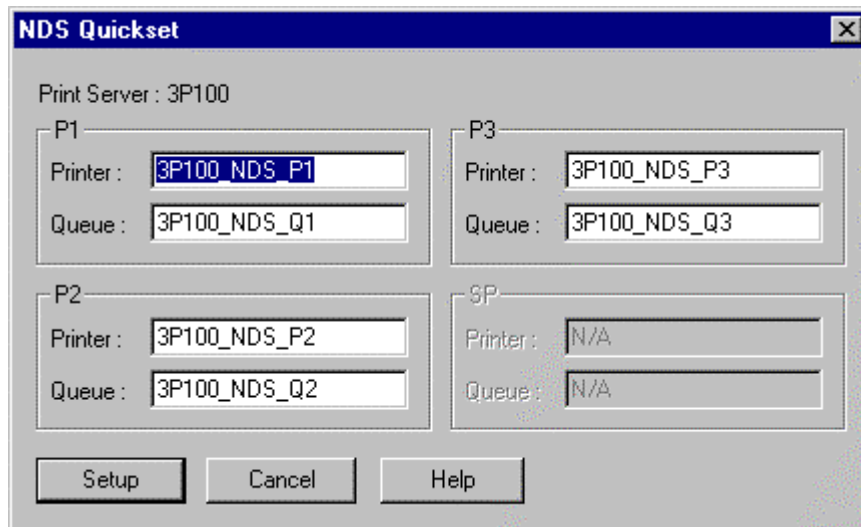


figure2

1.7 Press “Setup”(see figure2) then “Save to Device”(see figure1) to save the data to the Print Server.

2.To create a NDPS Manager object, complete the following:

Before you can create an NDPS printer, you must first have created an NDPS Manager (once) on your server.

Procedure

Invoke NetWare Administrator Nwadmn32.exe which is located in SYS:\Public\Win32

- 2.1 Select the container on NetWare Administrator where you want the NDPS Manager object to reside. (e.g.: TeSupp)
- 2.2 Select “Create”-> “Object” from menu bar.
(The “New Object” dialog appears.)
- 2.3 Select “NDPS Manager”.
(The Create NDPS Manager Object dialog appears.)
- 2.4 Type a name in the NDPS Manager Name.
(e.g.: SerMGR, see figure 3)
- 2.5 Enter or Browse the “Resident Server” field, to set it to the Server you want this Manager assigned. (e.g.: ECH_50.TeSupp, see figure 3)
Enter or Browse the “Database Volume” field, to set it to the NDPS manager database, you want to use for this Manager Object(e.g. TECH_50.Tesupp, see figure3)

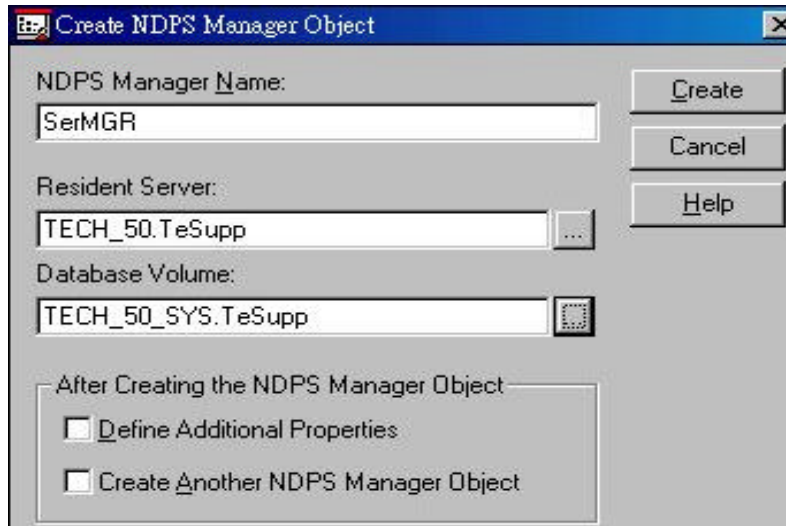


figure 3

2.6 Click Create.

The new NDPS Manager will appear in the main browser window. Exit.

2.7 Go to the NetWare Server's console, activate the Resource management Service and NDPS Manager with the following Command

Load BROKER (enable Resource Management Service)

Load NDPSM

Then select the DPMS Manager you created (e.g. SerMGR)

NOTE: To autoload the NDPS Manager when you bring up the server, add the following line to your server's AUTOEXEC.NCF file:

Load NDPSM NDPS_MGR.Object.container

For example: LOAD NDPSM SerMGR.TeSupp

2.8 After creating an NDPS Manager, you can create NDPS printers by using NetWare Administrator

3. Create NDPS printers by using NetWare Administrator

After creating an NDPS Manager (Load NDPSM), you may create NDPS printers by using NetWare Administrator.

3.1 Under NetWare Server's console, press "Alt+Esc" key to transfer to NDPS Manager console.

3.2 In "NDPS Manager" console, you would see "Printer Agent List" then press "Ins" key to create new printer agent. Type printer agent name (e.g. tsPAgent) in "Create Printer Agent"

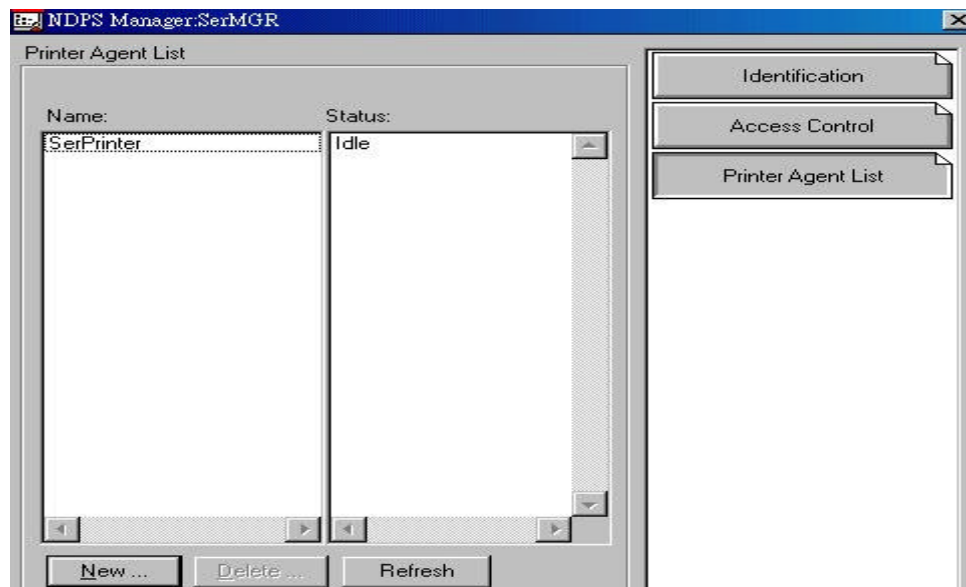
3.3 In "Printer Configuration" menu box, select "Configuration Utilities", the cursor would stay on "(See List)", press "Enter" key.

3.4 In "Gateway Type" menu box, select "Novell Printer Gateway"

- 3.5 In “*Select a printer*” menu box, select the printer you would like to install on print server.
- 3.6 In “*Port Handler Types*”, select “*Novell Port Handler*”
- 3.7 In “*Connecting Type*” menu box, select “*Queue Based Printer*”
- 3.8 In “*Port Handler Configuration : Queue Based Mode*”, type queue name for “*Distinguished Queue Name*” (e.g. SCF00002_NDS_Q1.TeSupp) and user name for “*User Name*” (e.g. admin.TeSupp), and key-in password.

4. To create Public Access Printers using the NDPS Manager Object in NetWare Administrator, do the following:

- 4.1 Double-click on the NDPS Manager object (previously created e.g. SerMGR)
- 4.2 Click the “Printer Agent List”.



5 Installing and Configuring Public Access Printers on Your Workstation.

After installing IntranetWare Client v2.2 (or later) on each workstation that will be using NDPS.

The following procedure allows you to install an NDPS printer on your workstation with the Novell Printer Manager utility. If you're running Windows 95, execute Nwpmw32.exe which is located in SYS:\Public\Win32

- 5.1 Select New -> from “Printer” menu on Printer Manager menu bar
- 5.2 Click “Add “ then will show available printer (see figure7).
- 5.3 Select the desired printer from the “Available Printers” list (bottom panel), then

click install.(e.g.: SerPrinter, see figure7)

5.4 Select Printer driver on Driver install screen

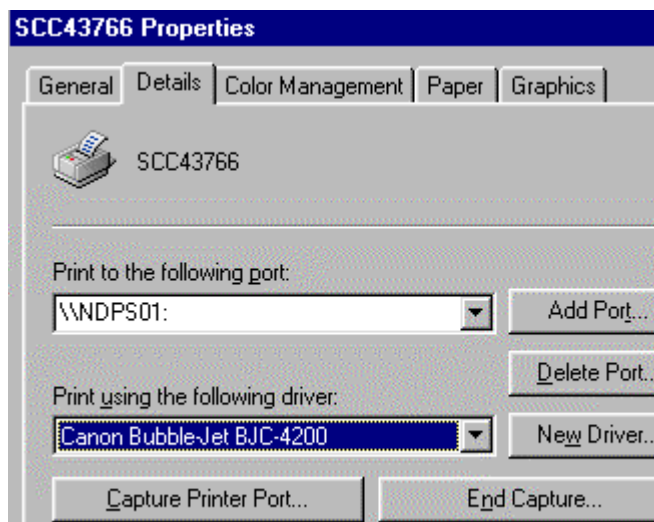
Note:

(a) If the printer driver of your printer is listed at Printer List, you can select this one.

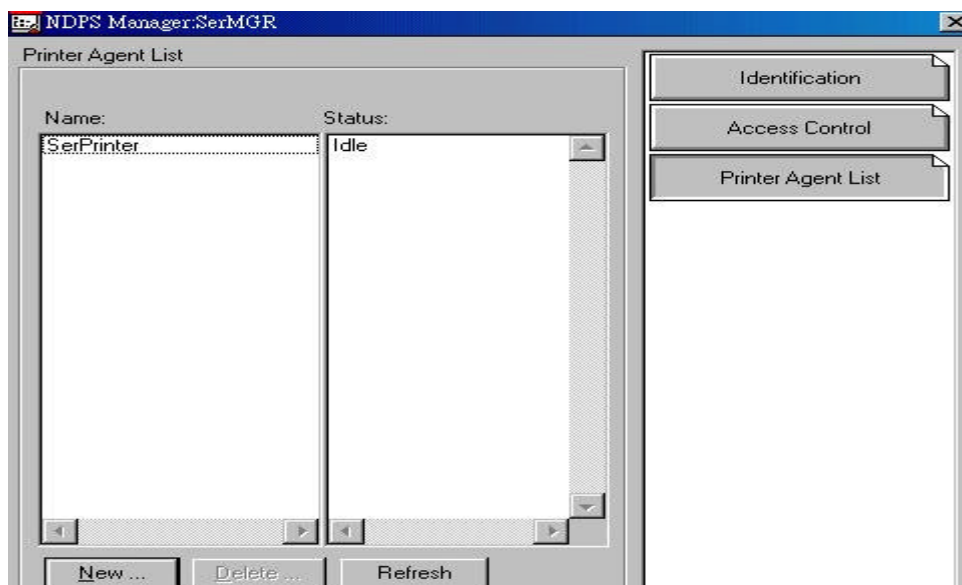
(b) If the printer driver of your printer is listed at Printer List, you can click "Browser" button to load Printer driver's *.inf from Printer driver's diskette.

(c) If the printer driver of your printer is not listed at Printer List, you can select any printer driver from Printer List then you can change printer driver from Windows "Printer Manager".

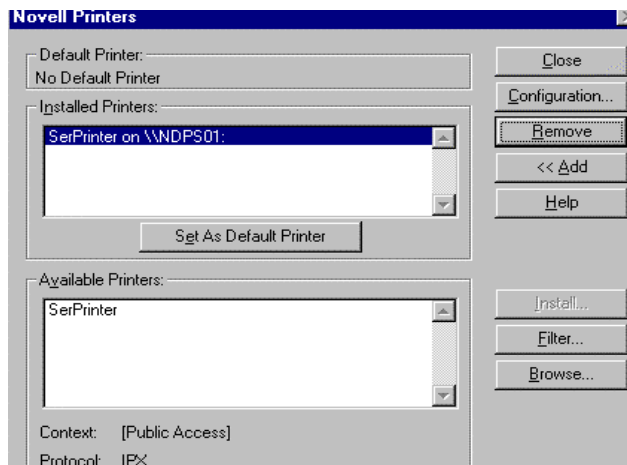
Start->Settings->Printers->Properties->Details->change printer driver from "Print using the following driver"



Go to 3.9 , press "Refresh" the status will to be idle(see figure6)



The printer SerPrinter appears in the main Printer Manager window and is available



for print jobs.

4.5 Click Close.

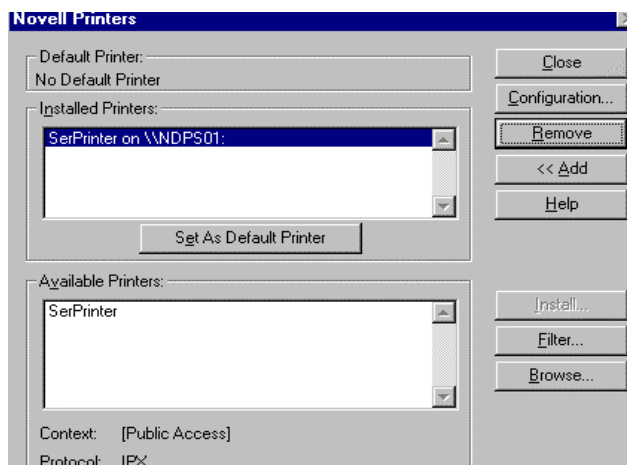


Figure7

**Q2: Does Print Server support NetWare 5.0 NDPS LPR printer gateway?
(NetWare 5.0 provide IPX/SPX and Pure IP protocols, this Q only for pure IP)**

Ans:Yes

Assume that

Example Tree Name=Novell, Organization=TeSupp, CN=Admin.TeSupp,

Server Name=TECH_50

Before you can create an NDPS printer, you must first have created an NDPS

Manager (once) on your server.

As usual, at a workstation to login to NetWare 5.0 Server as Admin. Invoke NetWare Administrator Nwadmn32.exe which is located in SYS:\Public\Win32

1 To create a NDPS Manager object, complete the following:

- 1.1 Select the container on NetWare Administrator you want the NDPS Manager object to reside. (e.g.: TeSupp)
- 1.2 Select "Create"-> Object from menu bar.
(The New Object dialog appears.)
- 1.3 Select "NDPS Manager".
(The Create NDPS Manager Object dialog appears.)
- 1.4 Type a name in the NDPS Manager Name.
(e.g.: SerMGR, see figure 1)
- 1.5 Enter or Browse the "Resident Server" field,
to set it to the Server you want this Manager assigned. (e.g.: ECH_50.TeSupp, see figure 1)
Enter or Browse the "Database Volume" field, to set it to the NDPS manager database, you want to use for this Manager Object(e.g. TECH_50.Tesupp, see figure1)

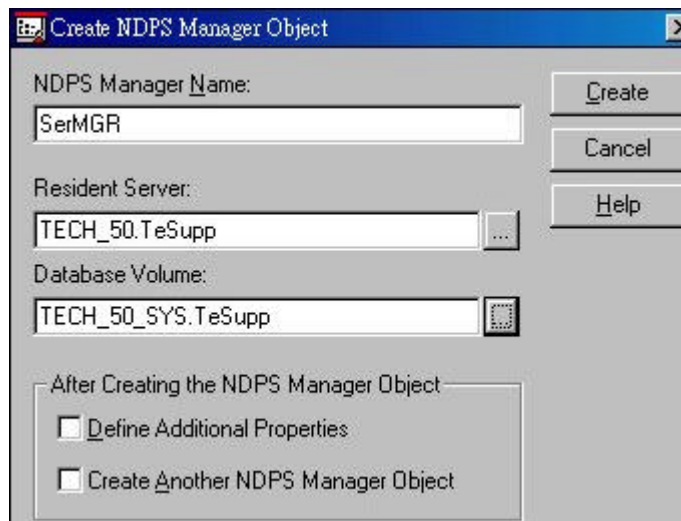


figure 1

1.6 Click Create.

The new NDPS Manager will appear in the main browser window. Exit.

1.7 Go to the NetWare Server's console, activate the Resource management Service and NDPS Manager with the following Command

Load BROKER (enable Resource Management Service)

Load NDPSM

Then select the DPMS Manager you created (e.g. SerMGR)

NOTE: To autoloading the NDPS Manager when you bring up the server, add the following line to your server's AUTOEXEC.NCF file:

Load NDPSM NDPS_MGR.Object.container

For example: LOAD NDPSM SerMGR.TeSupp

1.8 After creating an NDPS Manager, you can create NDPS printers by using NetWare Administrator

2. To create Public Access Printers using the NDPS Manager Object in NetWare Administrator, do the following:

2.1 Double-click on the NDPS Manager object. (previously created e.g.: SerMGR)

2.2 Click the “Printer Agent List”

2.3 Click “New”.

Enter the NDPS Printer name.(e.g.: SerPrinter, see figure2)

2.4 Select “Novell Printer Gateway” in the Gateway type(see figure2)

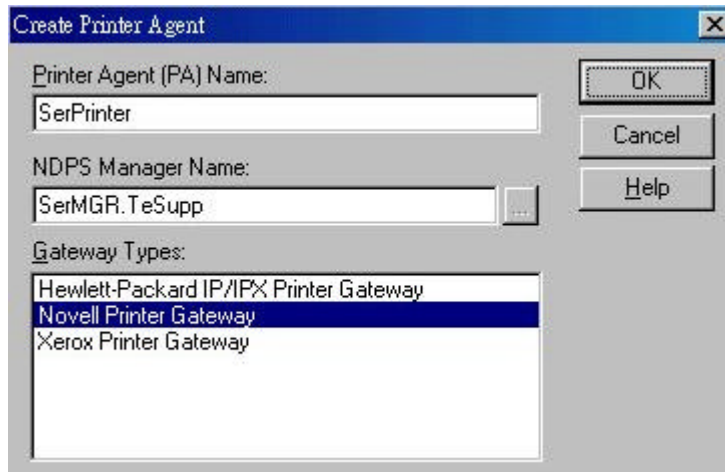


figure2

2.5 Select the available printer

Note:

(a) If the printer driver of your printer is listed at Printer List, you can select this one.

(b) If the printer driver of your printer is not listed at Printer List, you can select any printer driver from Printer List then you can change printer driver from Windows “Printer Manager”.

2.6 Select “Remote (LPR on IP)” in the Connection Type.

2.7 Click “Next”.

Enter Host address IP(previously assigned to Print Server)

Enter Printer Name in the Printer Name.(e.g.: L1.) (see figure3)

(For print server with one parallel port, the logical ports are ranged from L1 to L3. For print server with three parallel ports, the logical ports are ranged

from L1 to L8.)

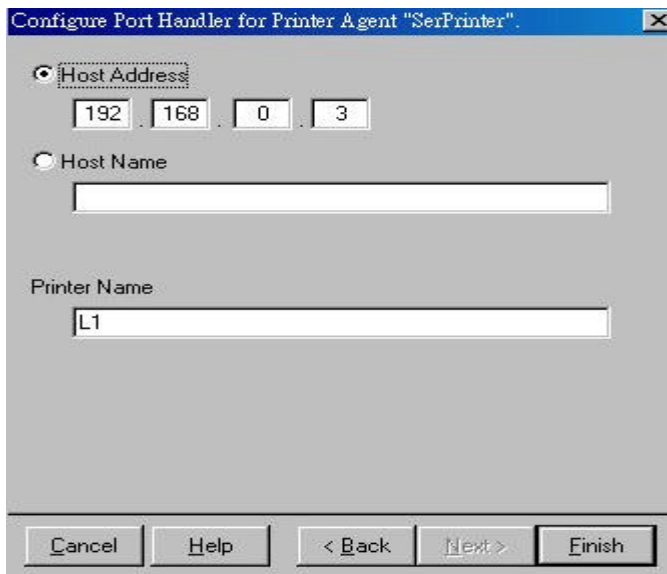


figure3

2.8 Click "Finish".

Select a driver for Windows 3.1, for Windows 95/98 and for Windows NT 4.
(see 2.5 Note)

2.9 The new Printer Agent SerPrinter will now appear in the Printer Agent List window (see figure4)

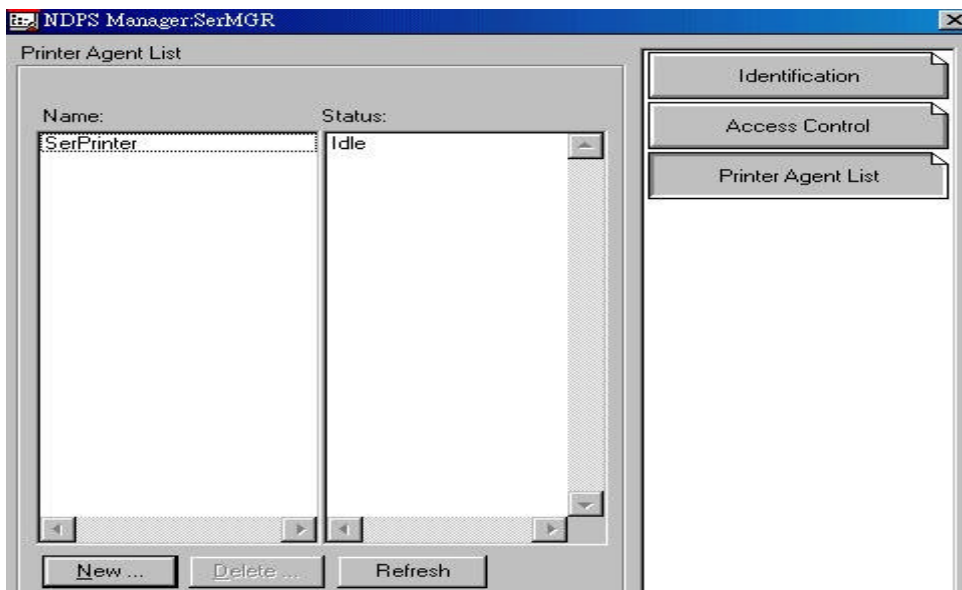


figure4

3. Installing and Configuring Public Access Printers on Your Workstation.

After installing IntranetWare Client v2.2 (or later) on each workstation that will be using NDPS, the following procedure allows you to install an NDPS printer on your workstation with the Novell Printer Manager utility. If you're running Windows 95,

execute Nwpmw32.exe which is located in SYS:\Public\Win32

3.1 Select “New” -> from “Printer” on Printer Manager menu bar

3.2 Click “Add”.(see figure5)

3.3 Select the desired printer from the “Available Printers” list (bottom panel), then click install.(e.g.: SerPrinter, see figure5)

3.4 Select Printer driver on Driver install screen

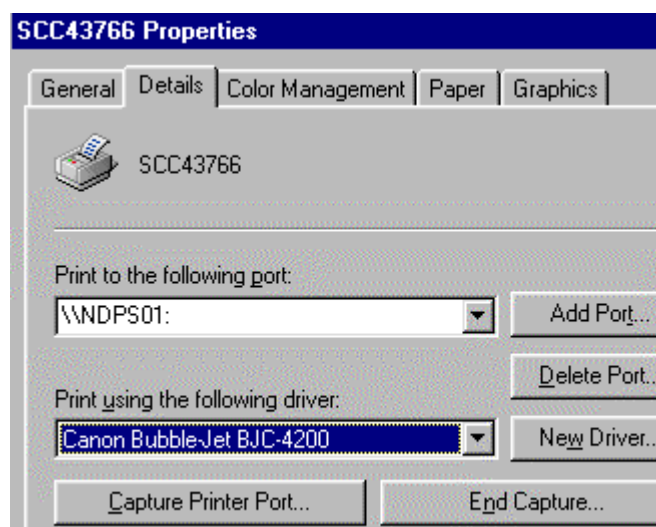
Note:

(a) If the printer driver of your printer is listed at Printer List, you can select this one.

(b) If the printer driver of your printer is listed at Printer List, you can click "Browser" button to load Printer driver's *.inf from Printer driver's diskette.

(c) If the printer driver of your printer is not listed at Printer List, you can select any printer driver from Printer List then you can change printer driver from Windows “Printer Manager”.

Start->Settings->Printers->Properties->Details->change printer driver from “Print using the following driver”



Go to 2.9 , press “Refresh” the status will to be idle(see figure4)

The printer SerPrinter appears in the main Printer Manager window and is available for print jobs.

3.5 Click Close.

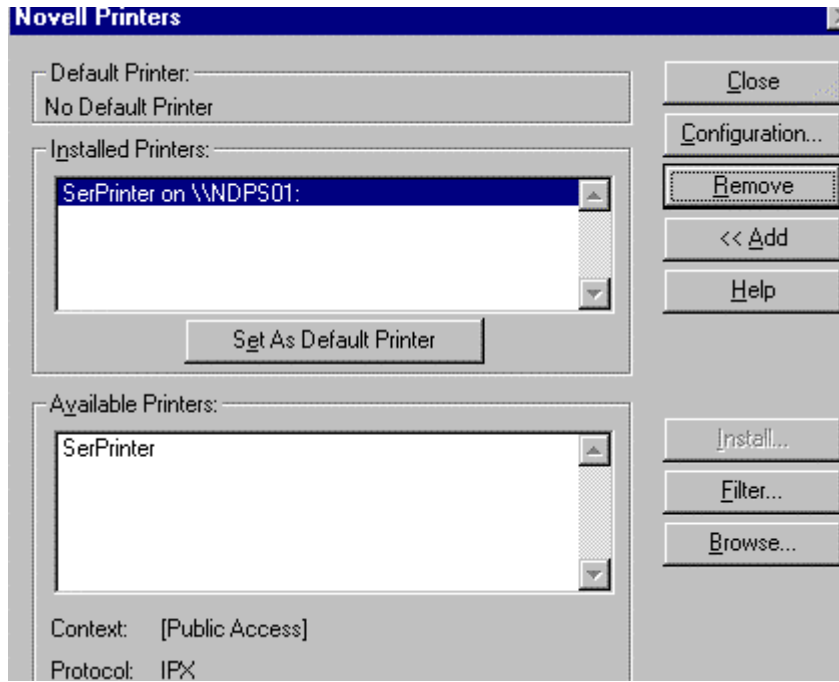


Figure5