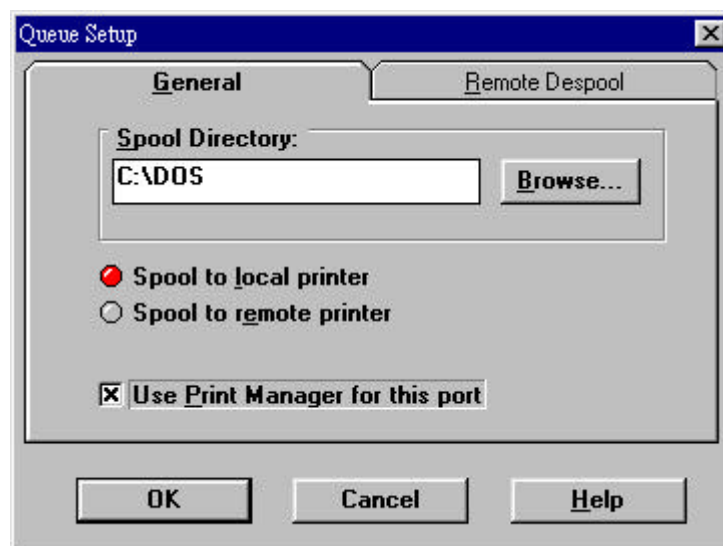


**\*\*\* Subject : Print Server and Epson series Installation \*\*\***

**Question : Why I can't print jobs from Epson Stylus color printer series in Windows 95 with Peer to Peer printing?**

**ANS:** Epson's proprietary Print Spool Manager is not compatible with Print Server driver .To solve this problem, you must use Windows Print Manager, and also rename Print Server port name. Just follow the steps below:

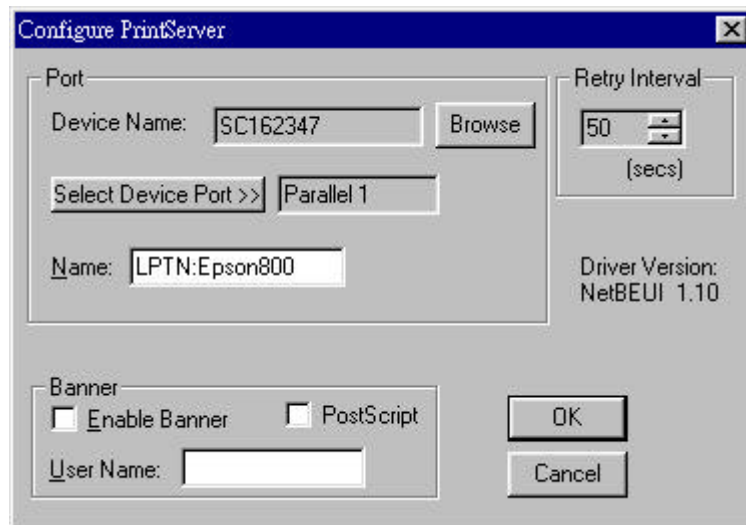
- 1.To use the Windows Spool Manager
  - a. Start the Epson Spool Manager
  - b. Double click the Print queue for the Epson stylus printer ( or select queue Setup from the menu ).
  - c. Click the "Use Print Manager for this port" box . Then click OK to exit.



2.Rename Print Sever Port name

You have two methods to rename Print Server port name

- a. Select Epson stylus printer => Select properties => Details => Add Port => other => Print Server Port =>OK => Browse for attached printer .Enter a name for the Port which begins with LPTN: , e.g.LPTN:Epson800 . Click OK to save and exit



Note: If you Enter name for the Port but received a Error Message “ LPTN:is an invalid port name” ,You must download new PTP driver from our ftp site "ftp.planet.com.tw" the directory was located

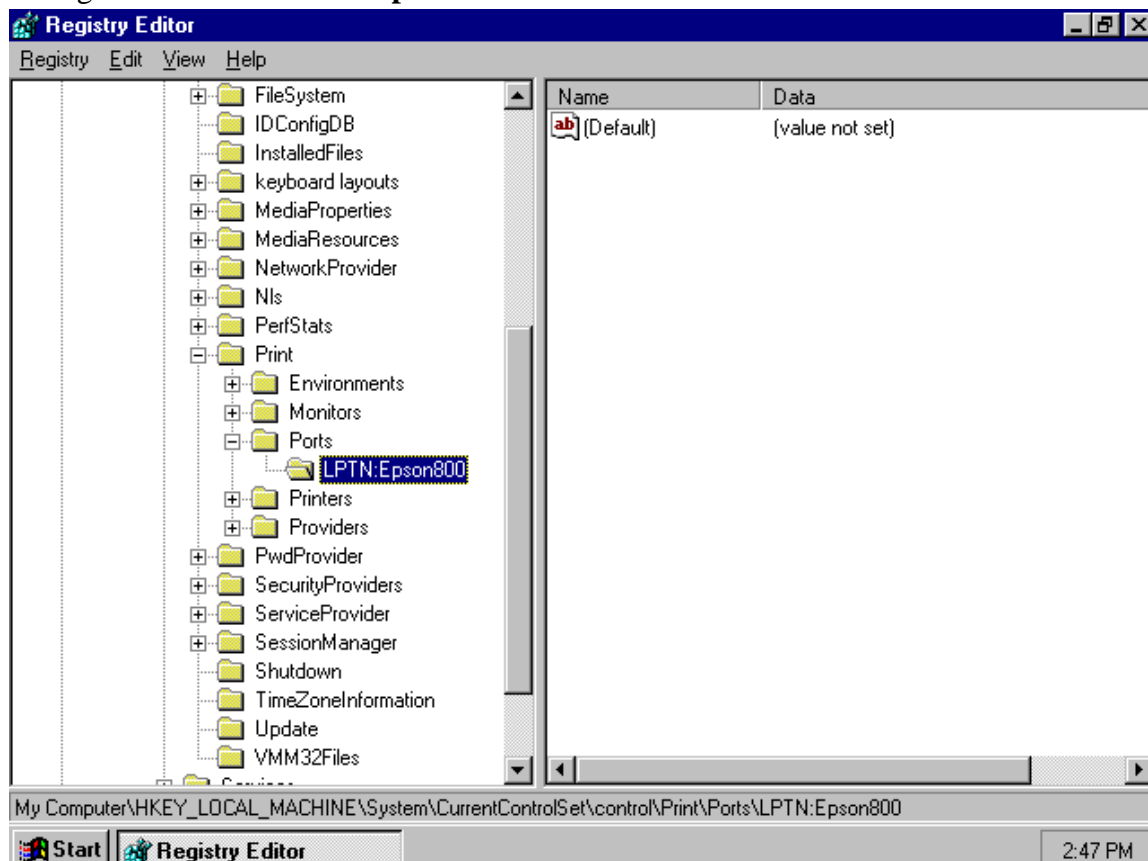
\Print\_Server\Driver\_utilities\PTP\_Printing\95NT1100.exe  
and reinstall new driver.

b. Modify registry

Run regedit.exe and file the string

\HKEY\_LOCAL\_MACHINE\System\CurrentControlSet\Control\Print\Ports\..

Change **PrServer** to **LPTN:Epson800**



Reboot PC

**Question : Why I can't print jobs from Epson Stylus color printer series in Windows 95 with Novell file server ?**

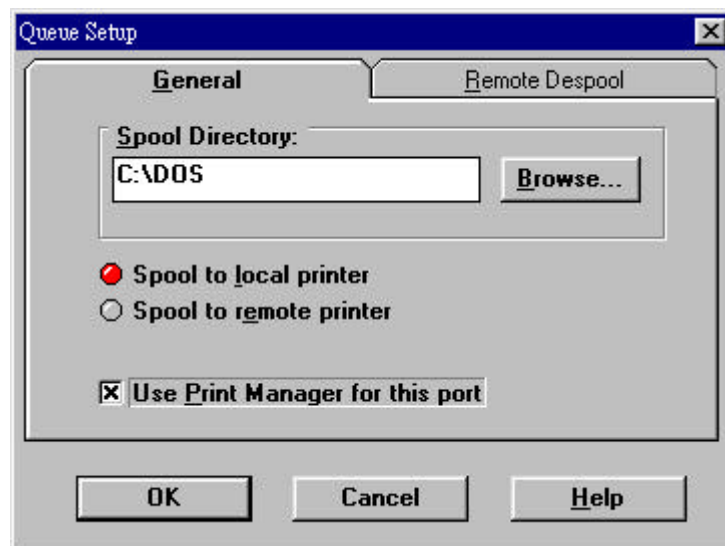
**ANS:** Epson's proprietary Print Spool Manager is not compatible with Novell queues .To solve this problem , you must use Windows Print Manager and set Remote Despool tab to Novell queues in Epson Spool Manager

1.To use the Windows Spool Manager

d. Start the Epson Spool Manager .

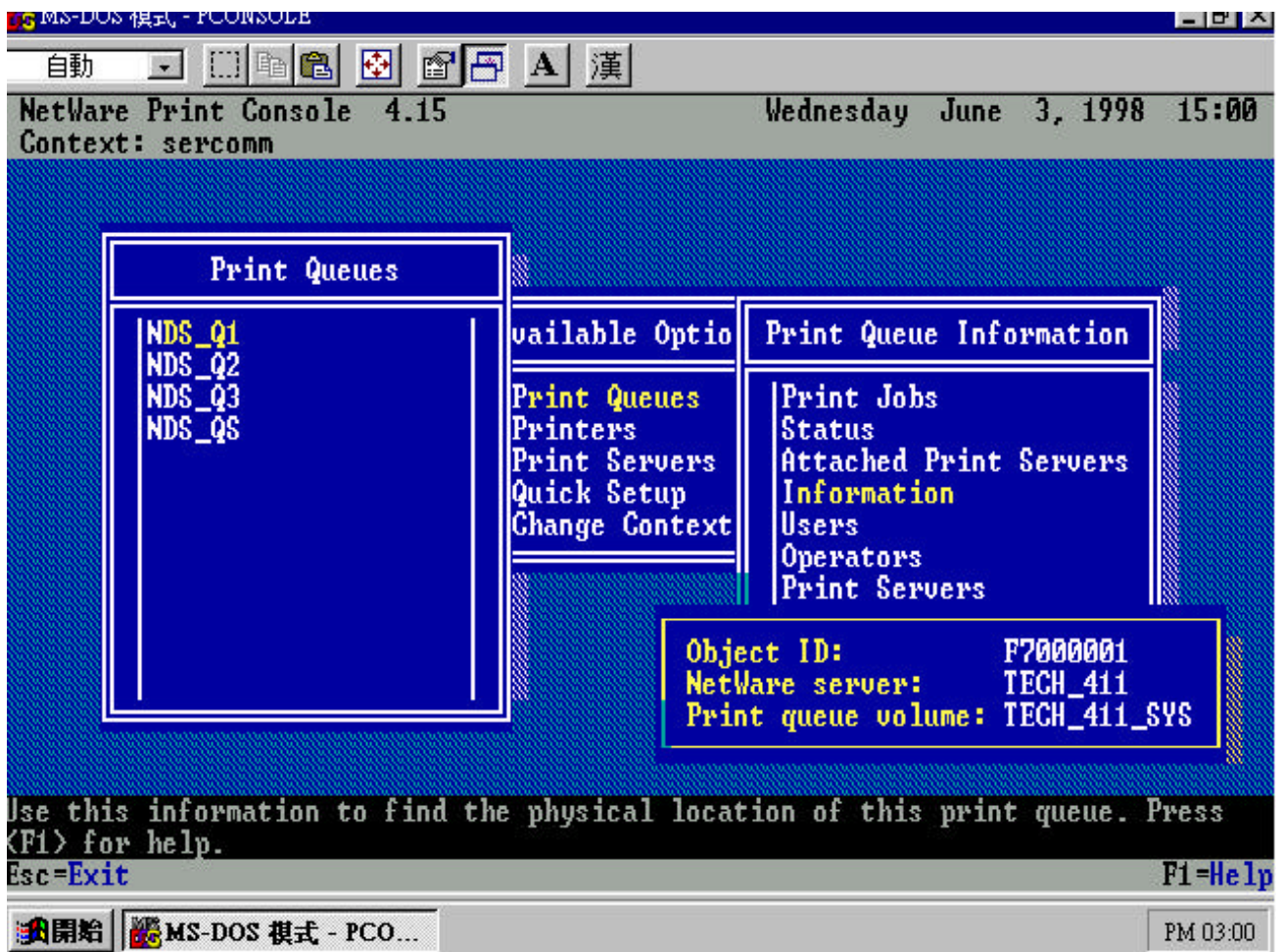
e. Double click the Print queue for the Epson stylus printer ( or select queue Setup from the menu ).

f. Click the "Use Print Manager for this port" box . Then click OK to exit.

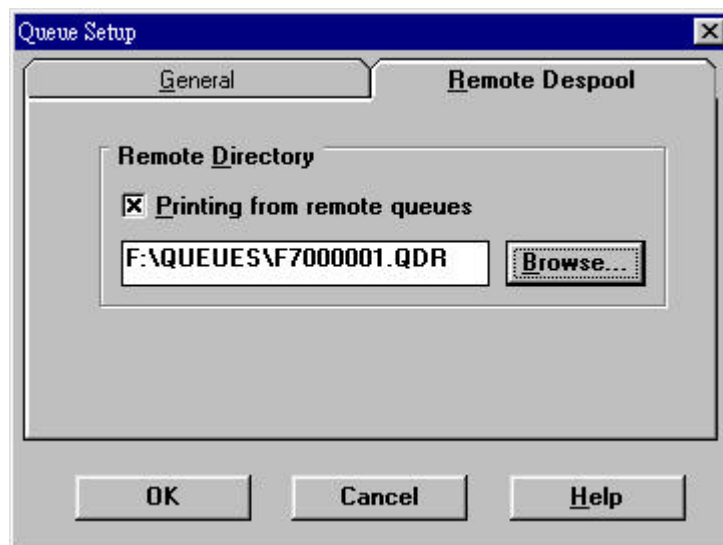


2. Remote Despool tab to Novell queues in Epson Spool Manager

a. Run pconsole to find Novell queues ID



- b. In Epson Spool Manager select "Remote Despool"  
=>Printing from remote queues use=>Browse to select Novell queues=>Click OK to exit.



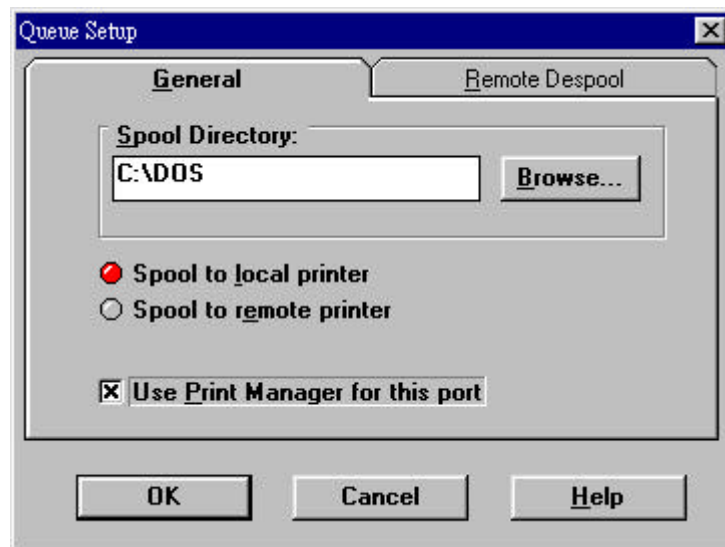
Question : Why I can't print jobs from Epson Stylus color printer series in Windows 95 with

## NT server ?

**ANS:** Epson's proprietary Print Spool Manager is not compatible with NT queues .To solve this problem , you must use Windows Print Manager

To use the Windows Spool Manager

- g. Start the Epson Spool Manager .
- h. Double click the Print queue for the Epson stylus printer ( or select queue Setup from the menu ).
- i. Click the "Use Print Manager for this port" box . Then click OK to exit.



2. Remote D